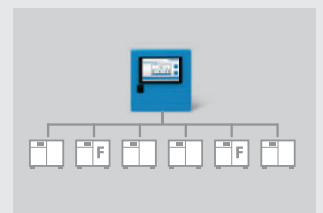
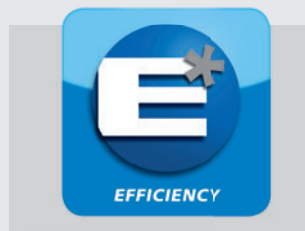


Treat yourself to a plus in efficiency: BOGE **airtelligence plus**.



Controls up to 6 compressors
in a combined compressor
system – predictive depending
on air demand.



A PLUS IN PERCEPTIBILITY.

The **airtelligence plus** is equipped with a 4" LCD colour display screen in the wide screen format including plain text display clearly showing operating conditions and operating parameters.

A PLUS IN COMFORT.

The **airtelligence plus** is designed for user friendly and intuitive operation. Connection of compressors is as simple as ever before: it can be done very quickly with a minimum of wiring by directly using the BUS interface.

A PLUS IN EFFICIENCY.

The **airtelligence plus** provides balanced utilisation of all connected compressors, thus reducing service costs. A change of compressors is possible at cyclic intervals. Alternatively, the weekly timer clock offers 50 channels for free programming of compressor utilisation (including switch-off, e.g. overnight).

A PLUS IN FLEXIBILITY.

Up to 6 compressors can be directly connected to the control system – this includes older compressors or compressors made by other manufacturers.

BOGE KOMPRESSOREN
Otto Boge GmbH & Co. KG

P.O. Box 10 07 13 · 33507 Bielefeld

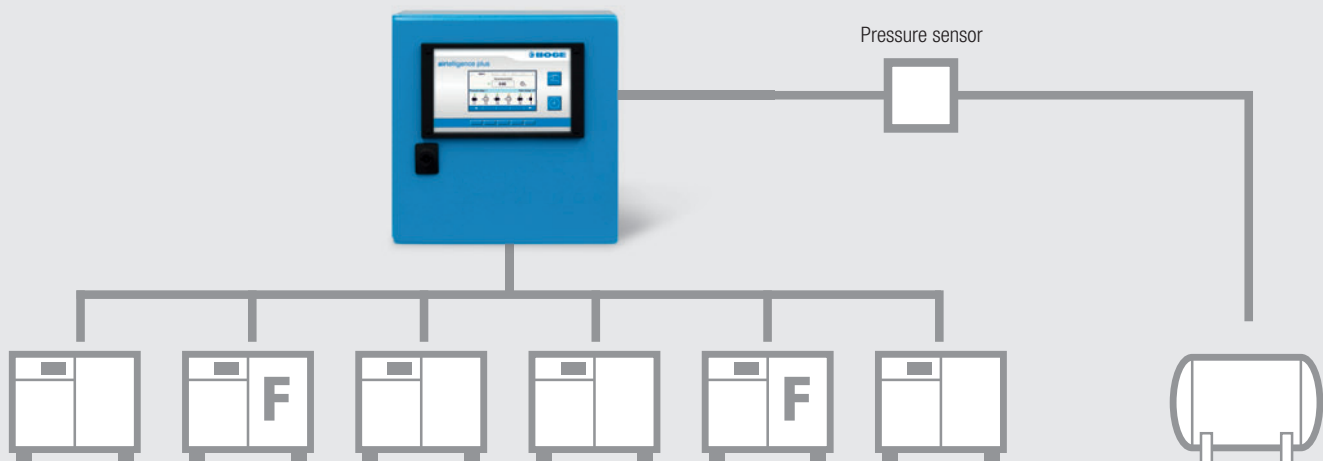
Otto-Boge-Straße 1–7 · 33739 Bielefeld

phone +49 5206 601-0

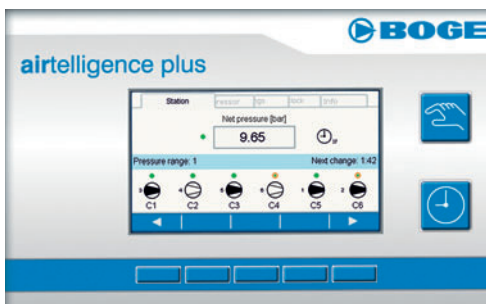
fax +49 5206 601-200

 info@boge.com · www.boge.com

Six times better connected: The BOGE airtelligence plus is able to control up to 6 compressors of the same or different outputs in a combined system. The selectable cyclic basic load switching ensures balanced utilisation of all compressors, thus reducing service costs and simultaneously increasing compressed air supply – this is how simple and cost effective efficiency can be.



Controlling the air demand of up to 6 compressors, including as many frequency controlled machines as you like. That is airtelligence plus from BOGE.


VISIBLE DATA

- Pressure display combined with:
 - display of currently operating compressors
 - current compressor priorities
 - currently remaining cycle time
 - display of weekly timer clock
- Display of selected pressure switch points P_{min} and P_{max}
- Real time clock


 For further BOGE controls and additional tools for the improvement of compressed air efficiency, please visit www.boge.com.